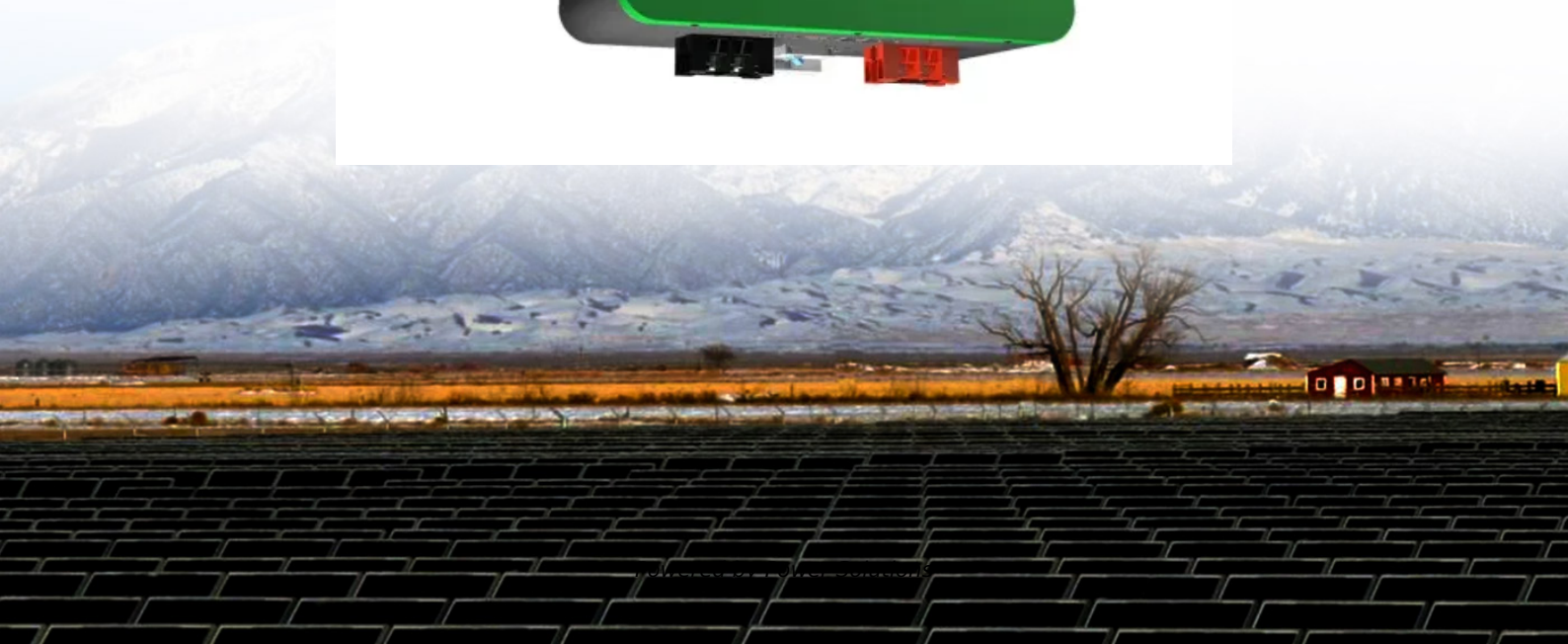


What is the soh of electrochemical solar container battery





Overview

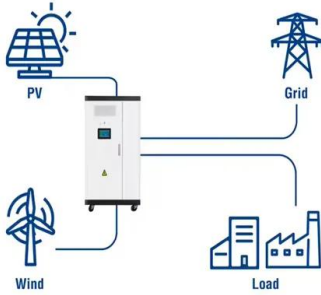
State of Health (SOH) refers to a battery's overall condition compared to its original performance when new. It is usually expressed as a percentage, representing the remaining usable capacity, internal resistance, and operational stability of the battery. It describes the storage capacity of the battery in the current state, that is, the ratio of the available capacity of the battery in the current state to the available capacity of the battery in the outgoing state, and the unit is the percentage (%). Theoretically, the SOH of the battery is 100%. Battery Cycle Standards: When search for batteries — whether for EVs, solar storage, or backup — you'll see specs like “Cycle Life: 6,000+ cycles”. But did you know these numbers can mean totally different things depending on how they're tested?

Cycle life means nothing without knowing whether it's. Battery capacity is one of the key performance indicators of a battery, indicating the amount of electricity a battery can deliver under certain conditions (discharge rate, temperature, terminal voltage), usually measured in ampere-hours (Ah). For example, a cell with a 48V, 100Ah capacity implies. State of Health (SOH) refers to a battery's overall condition compared to its original performance when new. It is usually expressed as a percentage, representing the remaining usable capacity, internal resistance, and operational stability of the battery. In commercial and industrial (C&I) energy. The state of charge of a battery describes the difference between a fully charged battery and the same battery in use. It is associated with the remaining quantity of electricity available in the cell. It is defined as the ratio of the remaining charge in the battery, divided by the maximum charge. However, their performance and lifespan depend heavily on two critical parameters: State of Charge (SOC) and State of Health (SOH). Understanding these metrics is essential for maximizing efficiency, preventing failures, and reducing operational costs. In this guide, we'll break down SOC and SOH.



What is the soh of electrochemical solar container battery

Utility-Scale ESS solutions

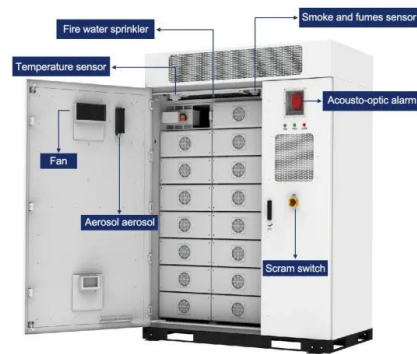


A Closer Look at State Of Charge (SOC) and State Of Health ...

The SOC parameter can be viewed as a thermodynamic quantity enabling one to assess the potential energy of a battery. It is also important to estimate the state of health (SOH) of a battery, which ...

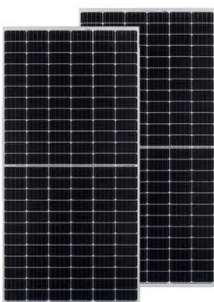
Understanding State of Health (SOH) in Energy Storage Systems

State of Health (SOH) is a vital metric in battery energy storage systems, representing the current performance and capacity of a battery relative to its original condition.



SOH estimation method for lithium-ion batteries based on an improved

Estimating the state of health (SOH) for lithium-ion batteries (LIBs) has always been one of the most important functions of battery management system (BMS). However, due to the LIBs' ...



What Is State of Health (SoH) and How Is It Measured in Batteries?

1. Capacity Testing Capacity testing is one of the most direct methods to assess a battery's SoH. It involves discharging the battery completely and measuring the total amount of ...



Battery Energy Storage System (BESS) , The Ultimate Guide

The sun is not always "on." A battery storage system works round the clock and therefore compensates for any fluctuations in solar energy supply by storing any excess energy and maximise renewable ...



The Importance of State of Charge (SOC) and State of ...

Discover the crucial role of State of Charge (SOC) and State of Health (SOH) in Battery Management Systems (BMS) and how they contribute to the efficient ...



Understanding State of Charge (SOC) and State of Health (SOH) in

State of Health (SOH) indicates the overall condition and remaining useful life of a battery. Unlike SOC, which is a snapshot of current capacity, SOH is a more comprehensive measure, ...



State of Health (SOH) in Energy Storage Systems

State of Health (SOH) refers to a battery's overall condition compared to its original performance when new. It is usually expressed as a percentage, representing the remaining usable ...



Comprehensive Review Of SOC, SOH, And SOP Estimation ...

Abstract Battery Management Systems (BMS) are critical components for maintaining the performance, safety, and longevity of energy storage in photovoltaic (PV) systems, where energy production is ...

Understanding Battery Parameters: DOD, SOC, and SOH in Energy ...

Discover the critical parameters of energy storage batteries: DOD, SOC, and SOH. Learn how these key metrics affect battery performance and longevity, enhancing the efficiency of energy ...



A Complete Guide to Battery State of Charge (SOC) and State of ...

State of Health (SOH) indicates a battery's condition relative to its original state. It reflects aging, capacity loss, and internal resistance buildup. A new battery has an SOH of 100%, which ...



Battery Cycle Standards: SOH, DOD, and EOL Explained with Real ...

Q1: What is SOH on my spec sheet? SOH is your battery's health compared to new. A new battery is 100% SOH. Q2: Why does my supplier show different cycle numbers for the same ...



Battery State of Charge vs State of Health: Complete Guide

For example, a battery with 80% SoH can only deliver 80% of its original capacity. SoH helps determine whether a battery is still reliable or if it's approaching replacement time. This is ...

What is SoH?

Understanding SoH At its core, SoH represents the relative health or condition of a battery compared to its original state when it was first manufactured. It serves as an indicator of the battery's ...



Dyness Knowledge , Solar and energy storage must-learn ...

The SOH of the battery largely reflects the aging degree of the battery. The causes of battery aging are complex, and the academic community generally believes that lithium-ion ...



What is the state of health (SOH) of an energy storage battery?

How We Ensure Good SOH in Our Batteries As an energy storage battery supplier, we take several steps to ensure that our batteries, including the OPZV Battery, High Rate Battery, and OPZS Battery, ...



What Is the State of Health (SOH) in Battery Standards?

In the rapidly evolving world of battery technology, understanding the State of Health (SOH) of a battery is crucial. It is a key indicator that measures the current condition of a battery ...

What Is SOH in BMS? A Complete Guide to Battery State of Health

State of Health (SOH) is a quantitative measure that assesses how well a battery performs compared to its original, brand - new condition. Expressed as a percentage (with 100% ...



What are SOC and SOH of a battery, how to measure them?

The state-of-health (SoH) of a battery describes the difference between a battery being studied and a fresh battery and considers cell aging. It is defined as the ratio of the maximum battery ...



What is the state of health (SOH) of an energy storage battery?

For a battery, SOH tells us how much capacity it has left, how efficiently it can charge and discharge, and how long it's likely to last. SOH is usually expressed as a percentage.



Contact Us

For catalog requests, pricing, or partnerships, please visit:
<https://www.crossworldtours.co.za>