

Simulink compression solar container simulation





Simulink compression solar container simulation



Attempting to move plane using SDK or UDP

Hi X-Plane Developers, I'm working with a 6-DOF model written in Simulink. I was tasked to figure out how to control X-Plane using our 6-DOF model. The original idea was to send UDP ...

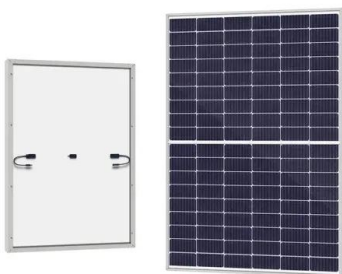
Simulink models to communicate with X-Plane 10

Hi everyone. I have basically created some Simulink models that allow communication between Simulink and X-Plane 10 (X-Plane 10, not 9!) Simply, it decodes the UDP data packets ...



Unexplained Behavior in X-Plane 12 Datarefs (Simulink)

Hello everyone, I have a Pixhawk PX4 6X and have installed HITL firmware on it through the official Pixhawk MATLAB add-on. The reason I'm doing this is to use hardware-in-the-loop (HITL) ...

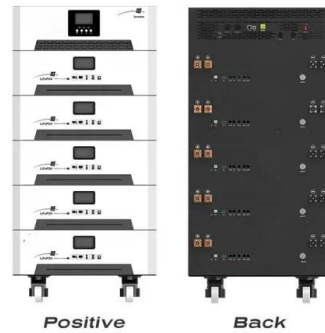


Using an external aircraft flight dynamic model

Good afternoon, I'm using X-plane 11 for research and I want to use my own aircraft flight dynamics. I'm using Matlab/Simulink and also Octave to run my algorithms and receiving the



aircraft ...



Visualizing a matlab-simulink flight model (eVTOL) in X-Plane 12

Hello, I'm quite new to X-Plane 12 and trying to get X-Plane 12 to communicate with matlab-simulink. My goal is to visualize my own simulink flight model (eVTOL) in X-Plane 12 without ...



Simulink to Xplane Datarefs (How to send)

Hello all. I want to send dataref from my simulink model to xplane. I can send by using function sendDref Nasa's XplaneConnect library but in Matlab. I cannot send in Simulink. I can send ...



Contact Us

For catalog requests, pricing, or partnerships, please visit:
<https://www.crossworldtours.co.za>