

# Rebars for solar container power station foundation construction





## Overview

---

Steel bars employed in constructing solar pipe piles typically include reinforcing steel bars (rebar) and concrete steel bars. Rebar, characterized by its high tensile strength, provides considerable support when embedded in concrete, ensuring structural integrity. Whitacre Rebar has established itself as a prominent supplier of high quality wire mesh and rebar products that are designed specifically for renewable energy farm construction. Our concrete formwork products meet all environmental legislation and government oversight requirements. Coupled with our. Concrete foundations for solar panels are a common type of solar system support structure used in solar installations, with a variety of design and construction methods for different site conditions and project needs. Foundation Type: Cast-in-place concrete foundation: constructed by drilling. Its utilization spans the entire spectrum of construction, from supporting solar panels to fortifying wind turbine foundations. Solar Panel Support Structures: Within the realm of solar energy, steel rebar and remesh play a foundational role in the assembly of robust support structures for solar. Steel rebars are a viable option for incorporating into the construction of solar power plants. In the construction industry, steel rebars are frequently utilized to reinforce concrete structures. This is particularly relevant for solar power plants, as concrete foundations are typically necessary. This guide is tailored for pile driving contractors and engineers involved in solar farm projects—providing an in-depth exploration of the techniques, materials, and challenges associated with pile driving in this growing sector. As the demand for renewable energy increases—solar farms are becoming. Solar panel foundation design requirements depend on multiple factors including mounting structure height, EPA values, soil conditions, and local wind load requirements. Key considerations for solar installations include foundation depth (typically 1/6 of pole height plus 2 feet), concrete.



## Rebars for solar container power station foundation construction

### GRADE A BATTERY

LiFePO4 battery will not burn when overcharged/over discharged, overcurrent or short circuit and can withstand high temperatures without decomposition.

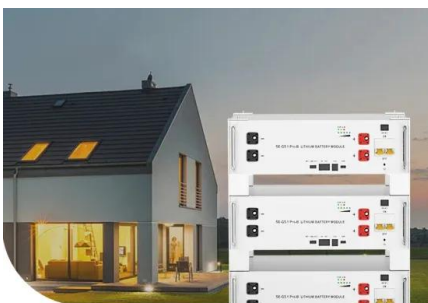


### Solar Farm , Fastfoot® for Solar Array Foundation Pads

The solar arrays were supported by 8" x 8" galvanized "I" beams driven from 4' to 8' into the ground. An accumulator station (the white buildings shown in the photo above) were located in ...

### Solar container station foundation construction drawing design

mobile solar power container is a groundbreaking innovation in the renewable energy sector, merging the efficiency of solar power with the flexibility of modular, portable design.



Low Voltage Lithium Battery

6000+ Cycle Life

### Steel Rebar & Remesh for Solar & Wind Energy

These structures provide both the framework and stability necessary for positioning solar panels optimally, ensuring they capture the maximum amount of sunlight. Steel rebar and remesh not ...

### Solar Power Plant Construction and Working: A Comprehensive ...

In this article, we will explore the construction and working of solar power plants, focusing on their critical components and operational processes.



### How Do You Reinforce Concrete with Rebar? A Step-by-Step ...

Learn how to reinforce concrete with rebar to enhance strength and durability in your projects. This article provides a comprehensive overview of rebar's crucial role, types, and selection ...



### What kind of steel bars are used for solar pipe piles?

The need for durable foundations in solar energy installations cannot be overstated, as demands for renewable energy sources escalate. The most common types of ...



**2MW / 5MWh  
Customizable**

### Energy Storage Power Station Container Foundation Diagrams: ...

Energy Storage Power Station Container Foundation Diagrams: The Blueprint You Can't Ignore Ever wondered what keeps those massive battery containers from doing the electric slide ...



**European Warehouse**  
🇩🇪 🇪🇺  
7-15 days  
ONE-STOP SOLUTION  
65kWh 30kW  
130kWh 30kW  
130kWh 60kW



## Can steel rebars be used in solar power plant construction?

Yes, steel rebars can be used in solar power plant construction. Steel rebars are commonly used as reinforcement in concrete structures, including the foundations and structural components ...



## Specifications of reinforcement bars for photovoltaic support

In the construction of pile foundations, a Bar Bending Schedule (BBS) is not just a technical document but a critical tool that ensures the durability, safety, and efficiency of the foundation.

## Contact Us

For catalog requests, pricing, or partnerships, please visit:  
<https://www.crossworldtours.co.za>