

How to choose solar container battery brand





How to choose solar container battery brand



Solve the following problems using the Formula given below

Answer: 19.22 (NORMAL) Explanation: FORMULA
Height(m)²W eight(kg) Given: weight: 45kg
Height: 1.53m substitute: weight(kg)/heightmx2
 $1.53 \times 245 \text{kg} = 2.3445 = 19.22$ What is BMI? ...

what information do you need to calculate your body mass

What information do you need to calculate your body mass index? A.height and weigh measurement B.vision screening result C.hearing test results D ntal - 21531...



How do we calculate our own Body Mass Index? By

Answer: To calculate your Body mass Index (BMI) divide your weight (in pounds) by your height (in inches) x your height (in inches) and then multiply by 703. For example, if you are 5'5" (65 ...



Over the summer,, you had fun and ate a lot of food. Your

Over the summer,, you had fun and ate a lot of food. Your cousin approaches you and wanted to know if she is still healthy with all the food she ate over the summer. Using your ...



d varies jointly as h and g. if d = 15 when h = 14 and g = 5, find g

SOLUTION: Step 1: Calculate the proportionality constant when d = 15, h = 14, and g = 5. Step 2: Solve for g when h is 21 and d is 8. Hence, the value of g when h = 21 and d = 8 is 16/9.

Directions: Compute the desirable body weight value for

Directions: Compute the desirable body weight value for Filipinos (DBW-F) and the total energy requirement (TER) using the given height of individuals. - 14066462



CHOOSE

choose definition: decide on a course of action. Check meanings, examples, usage tips, pronunciation, domains, and related words. Discover expressions like "choose sides", "choose poison", "choose up".





When to Use "Choose" vs. "Chose", With Examples , Grammarly

Choose is the present tense form of an irregular verb that means "to select something from a group of options or to decide on a course of action," whereas chose, the past tense of choose, ...



Activity 2: BMI Directions: Use the given data to compute the BMI

Activity 2: BMI Directions: Use the given data to compute the BMI. Identify its classification and show your solution. Weight-52 kg. Height-1.64 m
Weight-36kg. Height - 1.58 m ...

how to compute BMI step by step explanation

Answer: Body Mass Index is a simple calculation using a person's height and weight. The formula is $BMI = \frac{kg}{m^2}$ where kg is a person's weight in kilograms and m² is their height in metres ...



How to compute a body composition what is the (BMI) of 51

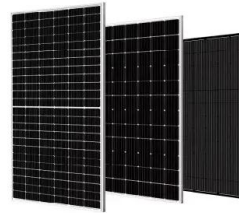
Body mass index (BMI) is a medical screening tool that measures the ratio of your height to your weight to estimate the amount of body fat you have. Healthcare providers calculate BMI by ...





CHOOSE definition in American English , Collins English Dictionary

If you choose someone or something from several people or things that are available, you decide which person or thing you want to have. They will be able to choose their own leaders in democratic ...



What's the Difference Between "Chose" and "Choose"?

Chose is the simple past tense of choose. Put differently, chose refers to the action of having selected or decided on something from a range of options or possibilities, but in the past.

"Choose" vs. "Chose" - What's The Difference? , Dictionary

Is it choose or chose? Choose means "to pick from several options," and it is the present tense form of the verb (the present tense form chooses is used after certain third person subjects, ...



choose

Choose, select, pick, elect, prefer indicate a decision that one or more possibilities are to be regarded more highly than others. Choose suggests a decision on one of a number of possibilities because of ...



Contact Us

For catalog requests, pricing, or partnerships, please visit:
<https://www.crossworldtours.co.za>