

# Disconnect the solar container power supply





## Overview

---

To effectively cut off the power supply from solar panels when they're not in use, adhere to the following steps: 1. Disconnect the inverter from the solar panels, 2. Switch off the AC and DC breakers, 3. Isolate the solar array, 4. Ensure safety protocols are in place, 5. Got an installation that I need to replace the main panel. There is an exterior disconnect a solar system that feeds a power wall and for back feed and power wall acts a generator when primary power is off. Question is what is the shut down sequence to eliminate all power without causing an issue. Should we disconnect/shut off the controller to the batteries when we are connect to shore power, operating off a generator or hooked to the tow unit?

New to on-board solar. There is no need to disconnect the solar in the situations you mentioned. The only time I disconnect my solar is when I store. Disconnecting your solar panels may sound pretty simple and straightforward. Unfortunately, this is not really the case, and getting it wrong can have dire consequences. Many folks don't realize that there are several "active" or "live" components in any solar system, particularly a hybrid solar. A solar disconnect switch is a critical safety device required in every photovoltaic system to protect installers, maintenance workers, and first responders. Under NEC Article 690.13, all solar installations must include readily accessible disconnect means that allow complete isolation of the. To effectively cut off the power supply from solar panels when they're not in use, adhere to the following steps: 1. Disconnect the inverter from the solar panels, 2. Switch off the AC and DC breakers, 3. Isolate the solar array, 4. Ensure safety protocols are in place, 5. Implement energy storage. To power a container, you have three main choices: Grid connection: If a utility line is accessible, you can trench cable and feed the container's electrical panel. This gives steady AC power, but long runs require heavy-gauge cable to prevent voltage drop, and utility permits are often needed.



## Disconnect the solar container power supply

---

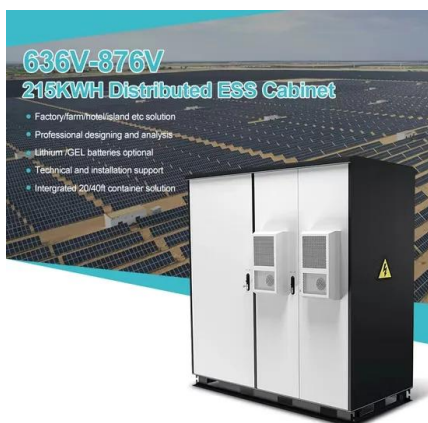


### How to Disconnect Solar Panels , Fast & Safe Steps

Homeowners sometimes choose solar power as they want the opportunity to disconnect their homes from the grid. The typical home solar system is designed in such a way that it helps in ...

### How to Safely Disconnect Solar Panels

There can be several reasons to disconnect a solar power system, the most common being for maintenance or repair purposes. Other reasons include moving to another place or, in ...



### Off grid container power systems -- Off-Grid Installer

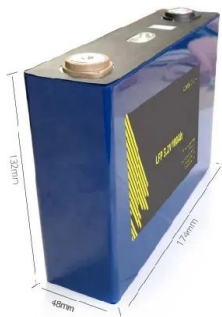
We are offering mini renewable power stations in a Off-Grid shipping Container ready to be deployed worldwide. These include solar PV panels and mountings.

### Can I run power to a shipping container? Off-Grid Solar Solutions for

In short, you can indeed run power to a container - either by extending a line from the grid or by turning the container itself into a mini power



station using solar panels.



### A Complete Guide on Disconnecting Solar Panels

Before attempting to disconnect the solar panels, isolate all AC or DC disconnect switches or fuses in the circuit. Try to make the disconnection at dusk, if at all possible when the ...

### Safely disconnect all energy sources , Information by ...

Some systems are installed with a rapid shutdown switch for the PV inverter and some have an emergency disconnect or remote switch for the battery. If you post what make and model of ...



### Disconnecting solar PV power supply boxes , Rand PV

Rand PV specializes in disconnecting solar PV power supply boxes. Combiner boxes save labor and material costs through wire reductions while enhancing overcurrent and overvoltage protection and ...



- ✓ ALL IN ONE
- ✓ 100Kw/174Kwh High Capacity
- ✓ Intelligent Integration



## How to select and install a solar disconnect switch

Learn how to select and install an a disconnect switch for your solar electric system.?Timestamps:0:06 Intro0:41 What is a disconnect switch?1:18 --- DC dis

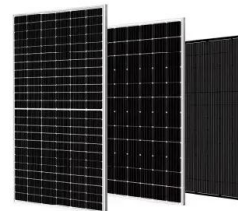


## Disconnecting Solar Panels: Should It Be Done

In general, solar panels can be disconnected, but the process and reasons for doing so can vary depending on the specific solar installation. For example, grid-tied solar systems can be ...

## How to Wire a Solar Panel Disconnect Switch: A Step-by-Step Guide

A solar panel disconnect switch allows for the easy and safe disconnection of a solar panel system from the electrical grid. It is an essential component for any residential solar panel system ...



## Disconnecting Solar System , My Grand RV

Just make sure you have a full battery disconnect (you will probably have to remove a battery cable unless you installed an additional switch) since there is a considerable draw on the ...



## How to remove the solar power supply from the storage container

...

To solve the problem of power shortage, African governments have proposed support for the development of rural electrification off-grid solution projects, utilizing clean energy such as wind and ...



## Solar Disconnect Switch: NEC Requirements & Installation Guide 2025

A solar disconnect switch is a manually operated switching device that isolates photovoltaic systems from all power sources for safe maintenance and emergency response.

## How to Disconnect Your Solar Panel (Complete Steps)

Whether you're moving, performing repair and maintenance, or preparing for a big storm, disconnecting your Solar PV system first is always a good idea. In this post, we'll explain how to ...



## How to cut off the power supply when the solar panels are not in use

A variety of methods can be employed to sever the power supply from solar panels effectively. Each method must be carefully considered based on the specific solar setup and the ...



## Contact Us

---

For catalog requests, pricing, or partnerships, please visit:  
<https://www.crossworldtours.co.za>