

Can i apply for the major of solar container science and engineering if i am color blind





Overview

Students can pursue either an Associate of Applied Science degree or a certificate with a concentration in photovoltaic and solar thermal systems. I want to work in the solar space helping to improve solar technologies (doing something good for the environment was my main reason for becoming an engineering in the first place). My college offers something called an interdisciplinary engineering degree where you combine courses from several. For prospective transfer, current non-Engineering Undeclared (non-DTC) students and Engineering Undeclared students with advanced credit, this table provides a quick picture of the courses required before applying to an engineering major and, if admitted, the courses required before enrolling in. Students who wish to study at the Clark School apply for admission to the University of Maryland; there is not a separate application for the Clark School. When filling out the university application, you may choose one of the engineering majors, or, if you're not sure exactly which one you want. The Texas A&M University College of Engineering has more than 20 degree options. With so many options, we don't ask you to decide on a major during the first year. Instead, you'll follow a common general engineering curriculum. This curriculum helps you to get started while exploring all our degree. First-year students who have questions about affiliation requirements and timeline or who are still deciding on a major, and unaffiliated sophomore students who plan to apply for Major Affiliation at the end of the Fall 2025 or Spring 2026 semesters. Students must apply to and be accepted into an. For complete information on the admissions process, including deadlines and other requirements, see NC State's Undergraduate Admissions. Be sure to read about application deadlines and notification dates. All first-year students are admitted to the Engineering First Year Program (EFY). Students who.



Can i apply for the major of solar container science and engineering



Frequently Asked Questions

Do I apply specifically to the School of Engineering? Students apply to the School of Engineering, School of Business or College of Arts & Sciences. Students applying to the Engineering School may ...

Entry to a Major Process , Texas A& M University Engineering

Entry to a Major Process The Texas A& M University College of Engineering has more than 20 degree options. With so many options, we don't ask you to decide on a major during the first year. Instead, ...



What to study to become solar engineer? : r/solar

You can have a degree that is required for a job in your chosen field, and end up never using a single thing relevant to that degree during your entire employment. (Usually that's a sign ...

Applying for a Major (Affiliation) , Cornell Engineering

Learn how to affiliate with an engineering major at Cornell. Understand eligibility criteria, application timelines, and the steps to declare your intended discipline.



College of Engineering

Only students admitted as undecided within the College of Engineering are allowed to choose among the primary majors of Civil, Chemical, Electrical & Computer, Environmental, Materials Science and ...

Admission to Major , Engineering Advising

Regional Campus Buckeye Engineers Students wanting to major in a "space available" major will be switched into the major when they campus change to Columbus. Students wanting to major in a ...



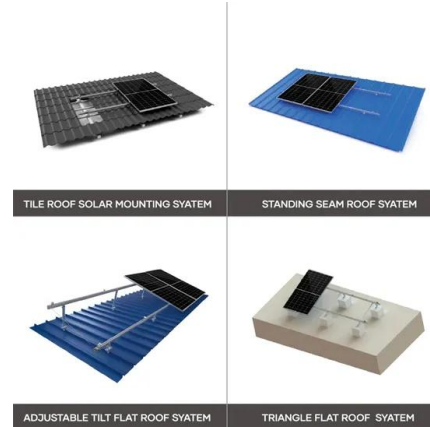
Frequently Asked Questions , A. James Clark School of ...

Applicants who are directly admitted to an engineering major (including the "Undecided Engineering" major) will receive a welcome email from the Clark ...



To what extent can environmental engineers be involved with ...

Could a major in environmental engineering prepare you to work with renewable energy sources and to what extent or aspect can you work with. Ex. solar panels, wind turbines, hydropower. Would I have ...



How to Apply to USC Viterbi - USC Viterbi , Undergraduate Admission

You Aren't Locked In To A Major We ask you to list an engineering or computer science major on your application, but that doesn't affect your chances of admission. If you are admitted to any of the Viterbi ...

Application and enrollment requirements for capacity-constrained

All majors require a minimum grade of 2.0 in each course and 2.50 GPA in prerequisites. Exception: BioE requires a minimum 2.5 grade in CHEM 162. Note: The Human Centered Design & Engineering ...



Admissions , College of Engineering

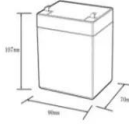

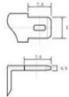
Engineering First Year Program All first-year students are admitted to the Engineering First Year Program (EFY). Students who know which engineering major they plan to pursue may indicate it on ...



International Applicants

If you have not taken a humanities/social science course in your final two years of secondary school, e.g., A-level students, international applicants can substitute the required teacher evaluation from a ...

12.8V6Ah

- Nominal voltage (V):12.8
- Nominal capacity (ah):6
- Rated energy (Wh):76.8
- Maximum charging voltage (V):14.6
- Maximum charging current (a):6
- Floating charge voltage (V):13.6-13.8
- Maximum continuous discharge current (a):10
- Maximum peak discharge current @10 seconds (a):20
- Maximum load power (W):100
- Discharge cut-off voltage (V):10.8
- Charging temperature (°C):-10-+50
- Discharge temperature (°C):-20-+60
- Working humidity: <95% R.H (non condensing)
- Number of cycles (25 °C, 0.5c, 100%doD): >2000
- Cell combination mode: 32700-4s1p
- Terminal specification: T2 (6.3mm)
- Protection grade: IP65
- Overall dimension (mm):90*70*107mm
- Reference weight (kg):0.7
- Certification: un38.3/mds



International Applicants : Stanford University

We do not have a preference for a specific curriculum (A-Level, IB, AP, National, etc.). You should complete the necessary coursework to apply to a university program for a bachelor's degree ...

Selection Criteria , Cal Poly

For First-Year Students Cal Poly requires you to declare a major when submitting your application. Our selection process considers many factors for admission in an objective format in which applicants ...

Support any customization

Inkjet

Color label

LOGO



Contact Us

For catalog requests, pricing, or partnerships, please visit:
<https://www.crossworldtours.co.za>