

# **3135 replica movement power storage time**





## Overview

---

This movement is a true masterpiece of replication, featuring a functional chronograph with a vertical clutch and a 72-hour power reserve—just like the real thing. It proved that the cloners weren't just playing catch-up; they were innovating within their own strange ecosystem. It has been confirmed that there is a version of the SH4132 which has a 24 hour counter sub-dial (not 12-hours which is normal for the movement). I am calling this version of the movement the QF4132. April 1st 2025 - Updated to include info about what I'm calling the SH3235 v3 which is an updated. If you plan long-term ownership, budget a full service within 12-24 months, earlier for chronographs. Balance assembly and regulator: clone balances may use different cutouts/screws or beat adjusters; loupe reveals differences. Bridges and engravings: fonts and depth vary; some factories have. The easiest way to identify this movement is by looking at the stud on the balance. It is round and on the left of the regulator. Working on the SA3135 is quite straight forward. Anyone who had worked on the 2824 family, should be able to service your 3135 clone. There is really nothing that was. chronometer movement certified by COSC. This means that the average rate of accuracy falls between -4/+6 seconds per day. You will get better results from a fully wound watch. There isn't a +/-screw so how can you adjust or regulate the timing?

The regulating luxury with the movement's precision. The Rolex caliber 3135 is an in-house automatic movement with 31 jewels. It is a Certified Chronometer (COSC) and is adjusted for five positions and temperature. It was originally announced in 1988, and has been used in many Rolex models since then. The calibre 3135 one of the most recognizable and. The genuine Rolex caliber 3235 is a relatively new movement with an astonishing 72 hour power reserve. Just like the genuine 3135 the genuine 3235 doesn't have a regulation arm on the balance bridge since the movement is regulated by adjusting micro screw weights on the rim of the balance wheel.



## 3135 replica movement power storage time

---



### 3135 Regulating , Replica Watch Info

First off were the 3135's with a few vr's that flatlined and most others were in range of +/- 1-2 sec. VR3130 in the zzf nodate was spot on zero along with the VS3235 in YM42.

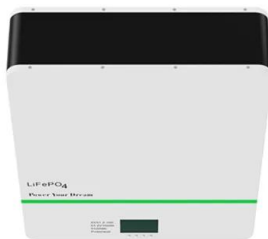
### Servicing a 3135 , Replica Watch Info

Movement can then be flipped back over, and now we can install the train of wheels. Firstly I like to start with the mainspring barrel, using a mainspring winder we can wind the ...



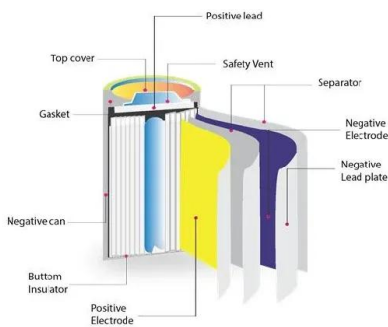
### How to spot 3135 movement on rolex? , Replica Watch Info

Hi i just bought a rolex rep with 3135 movement I dont want to open it to check Anyway to check without having to open the watch Thanks a lot ^^ And 1 more question:how to distinguish good ...



### Beginner's guide to the clone movements found in replica

The movement has an amazing 70+ hour power reserve and is part compatible with the genuine Rolex movement. This means that it's possible to swap gen parts into this movement to improve it.



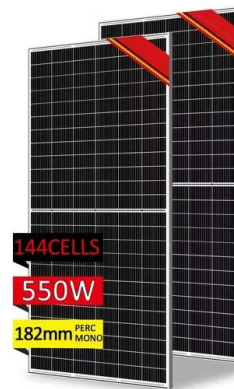
### Super Clone Rolex Movement & Technical Guide (Super Clone Rolex

...

This replica Rolex mechanical guide focuses on that truth: the movement. I'll explain how super clone Rolex movements are engineered, what "clone movement accuracy" actually means in ...

### Comprehensive Guide to Clone Movements Found in ...

The movement has an amazing 70+ hour power reserve and is a true clone, so it is part compatible with the genuine Rolex movement. This means that it's possible to swap gen parts into ...



### Rolex 3235 Tech Info : r/RepTime

Back to my bench today, time for a few insights on the Rolex 3235 movement while I finish the reassembly. Rather than an all-new movement, this is sort of an evolution of the almighty 3135: ...





### 3135 Movement Comparison (Gen/SA/SH/VR) , Replica Watch Info

The movement is inserted and turned and then the screws are loosened so that the press against the inside of the case and hold the movement. normally they just use tabs/screws to hold it ...



### Rolex Caliber 3135 Watch Movement

The caliber 3135 is an automatic movement found in several Rolex models. The 3135 first hit the market in 1988. It is a Certified Chronometer and features a 50 hour power reserve with 31 jewels.

### Movement accuracy (vr3135) : r/RepTime

Often, replica movements are not constructed in a sterile / very clean workshop, so particles of hair follicles, eyelashes, specs of dust, etc can fall into the movement when it's being assembled. A watch ...



### 3135 replica movement power storage time

movement is also sometimes called Yuki. It s really one of the original 3135 clone. The easiest way to identify this mov ment is by looking at the balance wheel. The regulator is rectangular an it is located ...





## Comparison of the genuine 3135 movement with the VS3135, ...

I have taken a lot of detailed comparisons between GEN and replica watches before, so this time I will make a comparison between the real and fake 3135 movements for everyone.



## Regulating a Clone 3135 Movement , Replica Watch Info

I've got a rep DSSD that's fitted with a clone Rolex 3135 movement. Unfortunately the watch is gaining about 20 secs per day and I'd very much like to regulate it but, whilst the timing ...

## Rolex Clone Movements - A Practical Guide (Summarized from ...

Source parts from trusted dealers familiar with movement batches; keep notes of your movement engraving and purchase date. If you plan long-term ownership, budget a full service within 12-24 ...



## Contact Us

---

For catalog requests, pricing, or partnerships, please visit:  
<https://www.crossworldtours.co.za>